



**REPAIRING CREAM FOR STRESSED, DAMAGED HAIR  
RINSE-OFF  
6780A**

**Formula**

<b>A</b>	<ul style="list-style-type: none"><li>• <b>MONTANOV 82</b> (<i>Cetearyl alcohol &amp; Coco-glucoside - SEPPIC</i>)</li><li>• Jojoba oil</li><li>• <b>LANOL P</b> (<i>Glycol palmitate - SEPPIC</i>)</li><li>• AMONYL DM (Quaternium 82 - SEPPIC)</li><li>• <b>Isostearyl isononanoate</b></li><li>• <b>SIMULGEL EG</b> (<i>Sodium acrylate/acryloyldimethyltaurate copolymer and Isohexadecane and Polysorbate 80 - SEPPIC</i>)</li></ul>	3.00 % 1.00 % 4.00 % 1.00 % 5.00 % 2.50 %
<b>B</b>	<ul style="list-style-type: none"><li>• Water</li><li>• Butylene glycol</li></ul>	QS 100% 3.00%
<b>C</b>	<ul style="list-style-type: none"><li>• <b>SEPICAP MP</b> (<i>Sodium cocoyl aminoacids and Potassium dimethicone PEG-7 panthenyl phosphate - SEPPIC</i>)</li><li>• <b>SEPICIDE HB</b> (<i>Phenoxyethanol/Methylparaben/Ethylparaben /Propylparaben/Butylparaben - SEPPIC</i>)</li><li>• <b>SEPICIDE CI</b> (<i>Imidazolidinyl urea - SEPPIC</i>)</li><li>• Fragrance</li></ul>	3.00% 0.30% 0.20% 0.20%

**Procedure**

Melt the ingredients in A at a temperature of 75°C. Heat the ingredients in B to 75°C. Emulsify A in B. When the temperature has dropped to 40°C, add the ingredients in C .

**Comments**

<b>SEPICAP MP</b>	Heat-activated multifunctional protector for brittle hair that has been damaged by sunlight, blow-drying, pollution, chemicals, etc. SEPICAP MP is a biological vehicle for amino acids and panthenol so it protects hair against oxidative damage. It is active on both the hair shaft and the root, and prevents flaking.
<b>MONTANOV 82</b>	A plant-derived, glycolipid emulsifying agent which gives fluid emulsions. Particularly suitable for formulations containing high levels of surface-active substances.
<b>SIMULGEL EG</b>	A thickening and emulsifying agent supplied in an easy-to-use liquid form.
<b>AMONYL DM</b>	A mild conditioner which prevents tangling without increasing body.
<b>LANOL P</b>	Improves the product's consistency - non-greasy - easy to rinse off

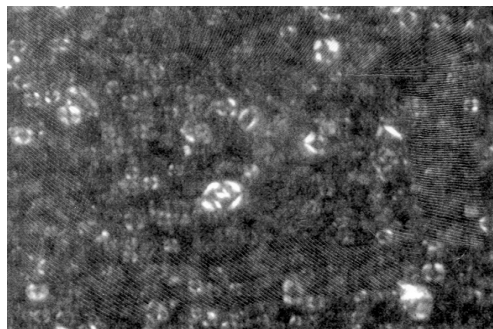


**SEPICIDE HB / CI** Preservative system.

### Characteristics

Appearance	cream
pH	about 6.3.
Viscosity	about 70,000 mPa.s BROOKFIELD LV4 V 6 rpm.
Stability	stable at AT/40/50°C stable during freeze thaw (-5°C/+40°C) stable on centrifugation at 50°C

Microscopic observation with polarized light: liquid crystals



### Notes

Jojoba oil (BERTIN)  
Fragrance: NINALIX X012.822 (QUEST)

### 6780A - SEPPIC –A0106

***No specific study has been made of the toxicity of this formulation. Specific products are only cited as an example and SEPPIC is not liable for any damage from resulting from either handling or use.***