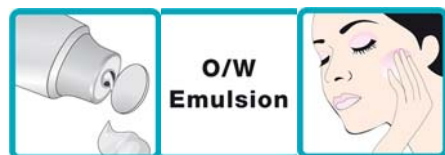


SEPPIC

EU06911B

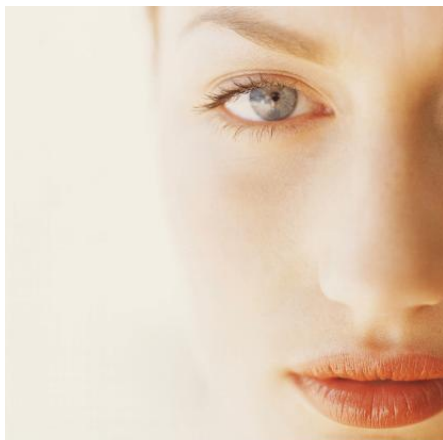
**“LIGHT INFUSED COMPLEXION”
EXPERT SKIN CARE**

· White O/W emulsion

· Packaging: tube

· Luxuriously textured cream owing to the association of Montanov™ 202 and Montanov™ 68.

· Sepiwhite™ MSH brightens the complexion



EU06911B - 0506

Formula

A	MONTANOV™ 202	2,00 %
	MONTANOV™ 68	2,00 %
	Isononyl Isononanoate	8,00 %
	LANOL™ P	2,00 %
B	Water	Up to 100 %
	SEPIWHITE™MSH	2,00 %
	Chrophenesin	0,30 %
	Tromethamine	0,75 %
	Magnesium Aluminium Silicate	1,00 %
C	SIMULGEL™ EG	2,00 %
	Cyclomethicone	4,00 %
D	SEPICIDE™ HB	0,70 %
	Fragrance	0,30 %
	DL α Tocopherol	0,05 %

Procedure**(TRIMIX - Rotor-Stator - 6kg)**

Melt A at 80-85°C in a double-walled tank to prevent mixture from overheating. Heat B at 80-85°C. Add the whole melted phase A into B, then start the homogenizer (rotor/stator turbine). Add phase C. After a few minutes, stop the homogenizer and cool gradually with moderate stirring to prevent the solution from recrystallization of MONTANOV 202. Add the ingredients of D at about 30°C. If necessary, adjust the pH at around 6.8 at the end.

Characteristics

Appearance	White cream
pH	Approximately 6.8
Viscosity at M1 RT	35,000 mPa.s BROOKFIELD LV 4 sp. 6
Stability	stable at room temperature, 40 and 50°C Stable after one month freeze-thaw cycles -5/+40°C Stable when centrifuged 20' 3000rpm

Raw materials from SEPPIC**MONTANOV™ 202****Arachidyl Alcohol and Behenyl Alcohol and Arachidyl Glucoside**

Glucolipid emulsifier in harmony with nature. It produces emulsions with a very light and evanescent sense of touch, which confers an easy application and a quick penetration. Their matt effect prevents skin from glossy and fatty aspect. Thanks to liquid crystals which contain water, Montanov™ 202 helps to keep skin moisturized.

MONTANOV™ 68**Cetearyl Alcohol and Cetearyl Glucoside**

Glucolipid emulsifier in harmony with nature. It can be used to formulate rich, smooth textures with any type of oil phase. In combination with the other grades of the Montanov™ range, it can be used to modulate the texture and flexibility of the emulsions as desired. Montanov™ 68 can promote liquid crystals according to the emulsion diagram, creating water reservoirs within the emulsion to maintain skin moisturizing. Montanov™ 68 offers the possibility to formulate without additional stabilizers.

SEPIWHITE™ MSH**Undecylenoyl Phenylalanin**

A new lightening active ingredient acting through an original pathway: Alpha MSH antagonist ("Melanotropin"), it reduces the synthesis of melanic pigments with a great efficiency as well as it preserves the skin. Because of its powdery aspect, Sepiwhite™ MSH fits perfectly to the formulation of cosmetic powders.

LANOL™ P**Glycol Palmitate**

Texturing agent which improves consistency and stability of the formula, without soaping effect.

SIMULGEL™ EG**Sodium Acrylate/Acryloyldimethyl Taurate Copolymer & Isohexadecane & Polysorbate 80**

Thickening and emulsifying agent in the form of liquid, this polymer is ready and easy for use (neither predispersion nor neutralization). Simulgel™ EG perfectly stabilizes emulsions at high temperatures, and allows to obtain rich, silky and easy-to-apply formulas.

SEPICIDE™ HB**Phenoxyethanol & Methylparaben & Ethylparaben & Propylparaben & Butylparaben**

Preservative

Other raw materials...Fragrance: **POUCE G92.30802 (ROBERTET)**

All information contained herein is intended merely to demonstrate the utility of SEPPIC products, and should not be construed as granting license to practice any compositions or methods covered by a patent or a patent application. All information contained in this specific technical documentation is believed to be accurate and has been set up by SEPPIC according to its own described methods and processes. SEPPIC however does not assume any liability or risks involved in the use of its products for the preparation and the assessment of the hereinabove formulation since the conditions of use are beyond its control. SEPPIC customer must insure that the duplication of the hereinabove formulation is not infringing any intellectual property rights and that it complies with any regulatory status.

www.seppic.com