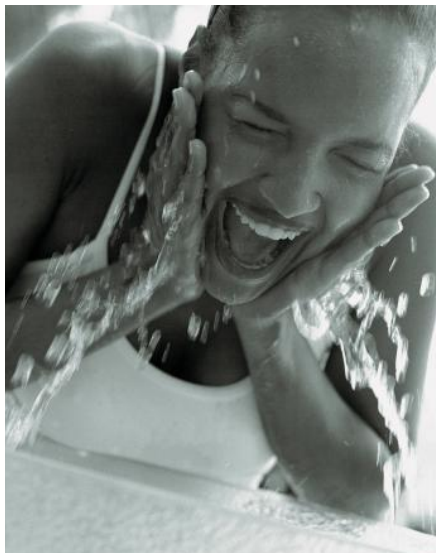


HYGIENE

EU07104 | DERMOPURIFYING MAKE-UP REMOVER

Green cosmetic



Gently cleanses the skin

Suitable for sensitive skin

A	Aqua/Water	Up to 100 %
	Sclerotium gum	0.15 %
B	Aqua/Water	Up to 30 %
	LIPACIDE™ C8G	1.00 %
	Sodium Hydroxide 48%	Up to pH 5.5
	Sodium Lauroyl Oat Amino Acids	2.00 %
	Glycerin	2.00 %
C	MONTANOV™ L	4.00 %
	Caprylic/Capric Triglyceride	4.00 %
	Squalane	4.00 %
	Corylus Avellana (Hazel) Seed Oil	2.00 %
	Cocos Nucifera (Coconut) Oil	4.00 %
	Prunus Amygdalus Dulcis (Sweet Almond) Oil	2.00 %
	Beeswax	0.30 %
	D	Water - Hordeum vulgare extract
Dehydroacetic Acid - Benzyl Alcohol	0.60 %	
Tocopherol	0.10 %	

With WESOURCE

Thin White & Fluid O/W Emulsion / Packaging: Bottle

pH: 5.68 / **VISCOSITIES: 1M at RT:** 3,580 mPa.s Brookfield LV4-6 /

Recovery at RT (after 1M at 45°C): 4,800 mPa.s Brookfield LV4-6.

STABILITY: 1M at RT & 45°C.

FORMULATION ADVICES: Laboratory scale - 2 kg - Dumek - Rotor-stator

Incorporate the water of phase A into the main tank. Disperse Sclerotium gum and stir until the gel is homogeneous. Heat the gel up to 80°C. In a separate vessel, prepare phase B (heat the water up to 80°C, add phase B ingredients in the right order (as listed in the procedure) and stir until the solution is clear). Add phase B onto phase A and mix well. Heat phase C up to 80°C and add phase C onto phase A+B and start emulsifying. Start cooling down. At 40°C, add phase D ingredients in the right order and mix well.

A gentle cleansing & make-up remover milk

The formula is suitable for sensitive skin!

Thanks to the green emulsifier **MONTANOV™ L**, the skin is well-moisturized & the formula has a light skin feeling.

(C14-22 Alcohol - C12-20 Alkylglucoside)

Glucolipid emulsifier in harmony with the nature. It is really useful to **synthesize fluid formulas**, no matter the nature or the quantity of fatty phase used. It allows to **stabilize emulsions**, and has a **strong moisturizing power** since it promotes liquid crystals which prevent the skin from dehydration (efficacy proven *in vivo*).

LIPACIDE™ C8G ensures that your formula is ok for sensitive skin: the cutaneous pH is well-balanced & a minor concentration of preservative is added. (Capryloyl Glycine)

It is a glycin biovector & skin acidifying agent which **protects the skin & enables to maintain its ecosystem**. It also protects cosmetic products by **increasing the microbiological stability** of low-preservative formulas.

ADDITIONAL INGREDIENTS: Squalane: Phytosqualane (SOPHIM) / Tocopherol: Dermofeel Toco 70 (DR. STRAETMANS) / Dehydroacetic Acid - Benzyl Alcohol: Geogard 221 (LONZA) / Water - Hordeum Vulgare Extract: Organic barley seedling water (SONIAM) / Corylus Avellana (Hazel) Seed Oil: (HUILES BERTIN) / Cocos Nucifera (Coconut) Oil: (HUILES BERTIN) / Prunus Amygdalus Dulcis (Sweet Almond) Oil: (HUILES BERTIN) / Sclerotium Gum: Amigum (ALBAN MULLER).

More informations available on seppic.com

SEPPIC

All information contained herein is intended merely to demonstrate the utility of Seppic products, and should not be construed as granting license to practice any compositions or methods covered by a patent or a patent application. All information contained in this specific technical documentation is believed to be accurate and has been set up by Seppic according to its own described methods and processes. Seppic however does not assume any liability or risks involved in the use of its products for the preparation and the assessment of the hereinabove formulation since the condition of use are beyond its control. Seppic customer must insure that the duplication of the hereinabove formulation is not infringing any intellectual property rights and that it complies with any regulatory status.

A company
Air Liquide
HEALTH CARE