

SEPPIC

EU07231

COCKTAIL: BOTTOM'S UP

ApOTHiCARE



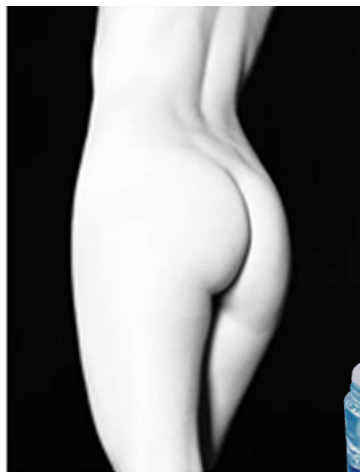
Cream
Gel



- Beige fluid cream-gel
- Presentation: dropper

- Direct from BRAZIL!
- Minimalist concept
- SIMULGEL™ INS 100 brings fresh texture, quick application
- Instantly lifts and tightens skin for a perfect look thanks to SESAFLASH™

20/80% ratio when mixed with the Universal Chassis EU07209



EU07231 - 1205



Formula

A	Deionized Water	40.00%
B	SIMULGEL™ INS 100	4.00%
C	C12-C15 Alkyl Benzoate	5.00%
	Slimbuster L	3.00%
D	SESAFLASH™	7.00%
	Glycerin	5.00%
	Caprylyl Glycol & Phenoxyethanol	1.00%
E	Deionized Water	35.00%
	Lactic Acid (85%)	Up to pH 7-7.5

Procedure

Trimix 7Kg

Add phase B into phase A. Mix until the formation of a homogeneous gel. Prepare phase C by heating both ingredients until complete solubilization. Cool it down under stirring. Add phase C into phase A+B. Add, one by one, the ingredients of phase D. Mix until complete homogenization. Adjust the pH with phase E.

Characteristics

Appearance	Beige fluid cream-gel
pH	7.09
Viscosity 1M at RT	18 800mPa.s Brookfield LV4 6rpm
Viscosity 1M at 45° C	12 100mPa.s Brookfield LV4 6rpm
Viscosity recovery at RT (after 1M at 45° C)	20 400mPa.s Brookfield LV4 6rpm
Stability	1M at RT and 45° C, cycles -5° C/+40° C

Raw materials from SEPPIC

SIMULGEL™ INS 100

Hydroxyethylacrylate / Sodium Acryloyldimethyltaurate Copolymer & Isohexadecane & Polysorbate 60

This compound is in the form of liquid, and is ready-for-use. It is a thickening agent which stabilizes all types of oily phases. It can be used in a wide range of pH (3 to 11), and for the development of all types of consistencies: sprays, ultra-fluid to thick ones. It gives to the formulas a fresh and melting texture.

SESAFLASH™

Glycerin & Acrylates Copolymer & VP / Polycarbamyl Polyglycol Ester & Hydrolyzed Sesame Protein PG-Propyl Methylsilanediol

An original, patented molecular combination containing sesame to instantly and visibly smooth the skin. Rejuvenation, firmness and comfort guaranteed! (in-vivo proven efficacy).

Other raw materials...

- *Coffea Arabica (Coffee) Seed Oil & Brassica Campestris (Rapeseed) Sterols* : **SLIMBUSTER L (CHEMYUNION)**
- *Caprylyl Glycol & Phenoxyethanol* : **OPTIPHEN (ISP)**
- *Lactic Acid* : **Acide Lactique (MERCK)**

All information contained herein is intended merely to demonstrate the utility of SEPPIC products, and should not be construed as granting license to practice any compositions or methods covered by a patent or a patent application. All information contained in this specific technical documentation is believed to be accurate and has been set up by SEPPIC according to its own described methods and processes. SEPPIC however does not assume any liability or risks involved in the use of its products for the preparation and the assessment of the hereinabove formulation since the condition of use are beyond its control. SEPPIC customer must insure that the duplication of the hereinabove formulation is not infringing any intellectual property rights and that it complies with any regulatory status.

* Our stability protocols are available at your request.

www.seppic.com